



Q-TEE II
Q-TEE II C

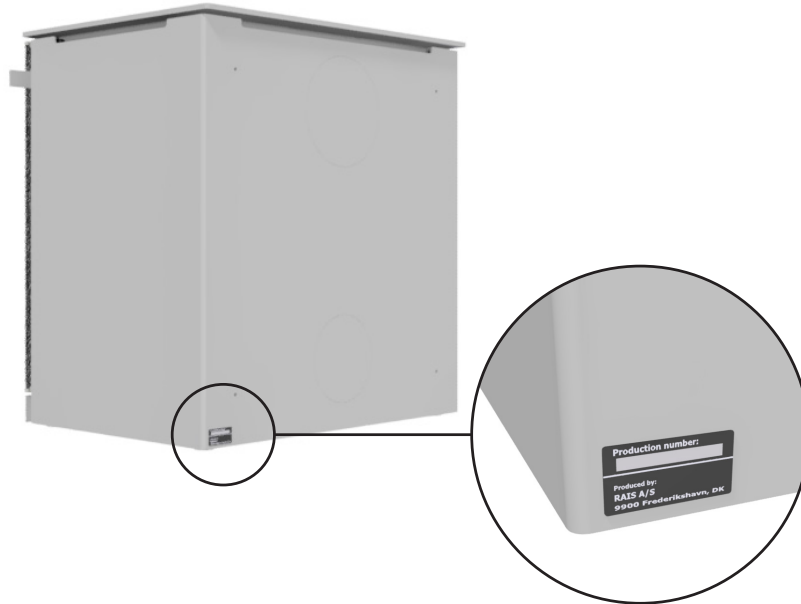
INSTALLATION MANUAL (ENGLISH)

RAIS[®]

attika[®]
FEUERKULTUR

PRODUCTION NUMBER

The production number is located on the back of the stove and on the first page of the user manual.



THIS MANUAL APPLIES TO THE FOLLOWING MODELS:

- Q-Tee II
- Q-Tee II C

Q-Tee II



Q-Tee II C



CONTENT

| | |
|---|----|
| PRODUCTION NUMBER | 2 |
| INSTALLATION MANUAL | 4 |
| Malfunctions | 5 |
| TECHNICAL DATA | 6 |
| Specifications | 6 |
| INSTALLATION DISTANCE | 8 |
| Installation distances at combustible walls | 8 |
| Installation distances for non-combustible walls | 9 |
| Installation distance in case of wall with wall panelling | 10 |
| DIMENSIONAL SKETCHES | 12 |
| Q-Tee II | 12 |
| Q-Tee II C | 17 |
| INSTALLATION | 22 |
| Recycling of packaging | 22 |
| Packaging at delivery | 23 |
| Height adjustment | 23 |
| Installation of smoke outlet in top outlet | 24 |
| Changing the chimney connection | 24 |
| Removing the combustion chamber lining | 25 |
| Mounting/changing the handles | 26 |
| CLEANING AND MAINTENANCE | 27 |
| EXTERNAL AIR CONNECTION - AIRSYSTEM | 28 |
| Air connection at the bottom | 28 |
| Air connection on the back | 29 |
| SPECIAL PRECAUTIONS FOR INSTALLATION IN UK | 30 |

Revision: 1
Date: 21-08-2025

We reserve the right to make printing errors.

INSTALLATION GUIDE

Thank you for choosing your new RAIS or ATTIKA product! This installation instructions manual will ensure that your stove is installed correctly and that it will provide you with comfort and pleasure for many years to come.

GENERAL

It is important to correctly install the stove out of consideration for both the environment and personal safety. The installation must comply with all local rules and regulations, including those that refer to national and European standards. A certified chimney sweeper should be contacted before set-up. No unauthorised alterations may be made to the stove.

Upon receipt, inspect the stove for any transport damage. Do not install the stove until you have checked it thoroughly.

FLOOR CONSTRUCTION

The floor structure must be able to support the weight of the stove and a chimney, if required. If the existing floor structure does not meet this requirement, suitable measures must be taken (e.g. installation of a load distribution plate). If in doubt, contact a building expert.

National and local regulations must be complied with, including the size of the non-flammable plate that must cover the flammable floor in front of the stove to protect the floor from falling embers.

DISTANCE TO COMBUSTIBLE MATERIAL

The stove must be positioned at a safe distance from flammable material. Due to risk of fire, flammable items (e.g. furniture) may not be positioned closer to the insert than specified in the sections on placement. When deciding where to install your RAIS/ATTIKA stove, you should consider being able to heat other rooms in your home to get the most out of your new stove.

VENTILATING SYSTEMS

The stove needs permanent and sufficient air to operate safely and efficiently. A permanent air supply can be installed in the room for the stove's combustion air - through the AirSystem connection. Under no circumstances should this air supply be closed during operation. Note that any mechanical extraction such as a cooker hood can reduce the air supply. The stove has an air consumption of min. 15.6 m³/h.

CHIMNEY

As a minimum, the chimney must be constructed of T400-N1-D-50050-G100 flue pipe, and be tall enough that the draught conditions are in order, i.e. 12 pascal to 18 pascal. If the recommended chimney draught cannot be achieved, problems of smoke puffing from the door may arise when heating. The collar is 150 mm in diameter. Remember: there must be unobstructed access to the access door on the chimney.

If the draught is too strong, it is advisable to equip the chimney with a regulating damper. If a regulating damper is fitted, you must ensure that there is a free flow-through area of at least 20 cm² when the regulating damper is closed.

The length of the chimney, calculated from the top of the stove should not be less than 3 metres and must be at least 80 cm above the roof ridge. If the chimney is placed on the side of the house, the top of the chimney must never be lower than the roof ridge or the roof's highest point. Note that there are often national and local regulations relating to houses with thatched roofs.

Always make sure to comply with applicable standards (EN 15287-1:2023 and EN 15287-2:2023) for chimney installation. It is also important to check the correct functioning of the chimney according to EN 13384-2:2015+A1:2019 based on the individual solution on site.

ATTENTION!

The appliance shall not be installed with ventilating systems which have pressure below -15 Pa.



ATTENTION!

RAIS/ATTIKA recommends having the appliance installed by an authorised technician. Please ask your dealer for further information.





ATTENTION!

Before the stove may be put to use, the set-up must be reported to your local chimney sweeper.

MALFUNCTIONS

If you are experiencing disturbances, some of the most common causes are listed below.

SMOKE SPILLAGE AROUND THE DOOR

- This may be due to insufficient draft in the chimney <12Pa
- Check whether the flue or chimney is blocked
- Check whether the hood is switched on and, if so, switch it off and open a window / door near the stove for a short period.

SOOT ON GLASS

- Excessively wet firewood
- The damper regulation is too low
- Ensure proper heating of the stove when lighting, prior to closing the door

STOVE IS BURNING TOO STRONG

- Leak around the door seal
- Chimney draft too large >18 Pa, draft regulator should be installed.
- The damper is not regulated down enough

STOVE IS BURNING TOO WEAK

- Insufficient wood
- Insufficient air supply for room ventilation
- Unclean smoke flue
- Leaky chimney
- Leakage between chimney and flue

INSUFFICIENT DRAUGHT IN THE CHIMNEY

- Insufficient temperature difference, e.g., due to poorly insulated chimney
- High outside temperature, e.g., in the summer
- Absence of wind
- The chimney is too low and sheltered
- Leaks or other false air in the chimney
- Chimney and flue clogged
- The house lacks ventilation (lack of fresh air supply)
- Negative smoke extraction (poor draft conditions)

With a cold chimney or severe weather conditions, the poor draught can be compensated by supplying the stove with more air than usual.

If the interruptions persists, we recommend that you contact your RAIS dealer or chimneysweep.

SPARE PARTS

You can view the spare parts we offer by scanning the QR code if you need new ones for your product. The warranty disappears if replacement parts are used that are not recommended by RAIS. Your RAIS dealer is able to provide spare parts for all interchangeable parts.



SPECIAL PRECAUTIONS FOR INSTALLATION IN UK

INSTALLATION INSTRUCTIONS

The following pages give instructions for the safe and proper installation of this heating appliance in the UK. These instructions cover the basic principles of installation, although detail may need slight modification to suit particular local site conditions. In all cases the installation must comply with current UK Building Regulations, Local Authority Byelaws and other specifications or regulations as they affect the installation of the stove. Please note that it is a legal requirement under England and Wales Building Regulations that the installation of the stove is either

carried out under Local Authority Building Control approval or is installed by a Competent Person registered with a Government approved Competent Persons Scheme. HETAS Ltd operate such a Scheme and a listing of their Registered Competent Persons can be found on their website at www.hetas.co.uk.


It should be noted that the current Building Regulations requirements are given in Approved Document J. These requirements may also be met by adopting the relevant recommendations given in British Standards BS 8303 and BS EN 15287-1.

SPECIFICATIONS

DTI Ref.: 300-ELAB-2543-EN

Q-Tee II

Q-Tee II C

|  | | Nominal | Standard: EN16510-2-1:2022 |
|---|--------------------|---|---|
| | | Wood logs | Fuel |
| P | kW | 6.7 | Nominal heat output |
| P _{SH} | kW | 6.7 | Space heat output |
| η | % | ≥ 75 | Efficiency |
| η _s | % | ≥ 65 | Seasonal space heat efficiency |
| EEL | - | 107 | Class A+ Energy efficiency index |
| CO (13% O ₂) | mg/Nm ³ | ≤ 1500 | CO emission at 13 % oxygen content |
| NO _x (13% O ₂) | mg/Nm ³ | ≤ 200 | NO _x emission at 13 % oxygen content |
| OGC (13% O ₂) | mg/Nm ³ | ≤ 120 | Hydrocarbon emission at 13 % oxygen content |
| PM (13% O ₂) | mg/Nm ³ | ≤ 40 | Particulate matter emission at 13 % oxygen content |
| p | Pa | 12 | Minimum flue draught |
| T _s | °C | 317 | Flue gas outlet temperature at the flue pipe collar |
| Tclass | - | T400 G | Chimney designation according to the appropriate chimney standard |
| Φ _{fg} | g/s | 5,6 | Flue gas mass flow |
| V _h | m ³ /h | 0 | Standing air loss |
| CON or INT | - | INT | Intermittent operation (INT) |
| t | min | 56 | Fuelling time |
| M _a | kg | 1.8 | Recommended wood quantity when filling (Divided into 2-3 pieces of firewood) |
| d _{out} | mm | 150 | The diameter of the flue pipe collar |
| L, W, H | mm | L 572, W 395 (Q-Tee II) L 656, W 471 (Q-Tee II C) H 603/ 723/ 763/ 883/ 983 | Overall dimensions of the appliance (length, width, height) |
| L _c , W _c , H _c | mm | 446/ 277/ 167* | Combustion chamber (length/width/height) |
| m | kg | 125 (Q-Tee II) / 137 (Q-Tee II C) | Mass of the appliance without legs or base |
| m _{chim} | kg | 20 | Maximum load of the chimney |
| Type | - | BE | Appliance intended to be supplied with combustion air via a combustion air duct |

*Max. load limit

RATING PLATE


All RAIS/attika stoves have a rating plate indicating the stove's distance to combustibles, efficiency etc. The name-plate can also be found by scanning the QR code.

Q-TEE II



Q-TEE II C



| Set-up distances | | Q-Tee II & Q-Tee II C | |
|---|----|-----------------------|---|
| d _R | mm | 300 | Minimum distance from the back of the stove to combustible material |
| d _S | mm | 400 | Minimum distances from the sides to combustible material |
| d _C | mm | 750 | Minimum distance from the top to combustible material at the ceiling |
| d _P | mm | 1200 | Minimum distance from the front to combustible material (Distance to furniture) |
| d _F | mm | 0** | Minimum distances from the front to combustible material in bottom front radiation area |
| d _L | mm | 0** | Minimum distances from the front to combustible material in side front radiation area |
| d _B | mm | 0 | Minimum distance below the bottom to combustible material |
| d _{non} | mm | 50 | Minimum distances to non-combustible walls |
|  | | | Read and follow the user operating instructions |

**0 mm: Since 65 K is not exceeded by radiation on the floor in front and/or on the side wall. Cf. EN16510 Note 3.

The stove was tested and approved by:
 DTI - Danish Technological Institute
 Teknologiparken Kongsvang Allé 29
 8000 Aarhus C, Denmark
 www.dti.dk
 Tel.: +45 7220 2000,
 Fax: +45 7220 1019

Read the section about installation distances in the installation guide.



SHARED FLUE

IMPORTANT! it is **NOT** allowed to connect multiple stoves to the same chimney in the **UK**.

In other countries it is permitted to connect several stoves to the same chimney, provided that the two stoves have the same owner, as in an example where a house has two floors with one stove in the living room and one on the first floor. It is a requirement that the inlets must be positioned so that there is a clearance difference between them of at least 250 mm.

IN CASE OF MARKET CONTROL

The specifications are based on nominal test results. During the nominal test, an ignition and two pre-fires are used to generate a basic glow layer of approximately 370 g prior to the test firing, which includes 1.8 kg of two pieces of firewood. From here, approximately 5 test cycles are carried out, each of which ends when the

weight reaches about 40 g. The weight at the end of the cycle must not differ by more than 100 grammes from the previous cycle.

The user manual includes a more detailed description of how to conduct the nominal test.

DECLARATION OF PERFORMANCE



DECLARATION OF CONFORMITY



To clarify whether the stove installation wall is flammable or otherwise, contact your building architect or local building authorities. Please make sure that objects made of combustible materials (such as furniture) are not placed closer than the distances indicated in the following tables (fire risk).

MINIMUM DISTANCE FOR CEILINGS AND FLOORS

Distance to ceiling from the top of the stove min. 750 mm. Distance to floor is 0 mm as the stove can stand directly on the levelling shoe, legs or base.



IMPORTANT

Please bear in mind that the installation distances on the following pages only apply to the wood-burning stove. The final choice of Chimney solution may have a larger safety distance to the flammable material. The Chimney solution must always be installed in accordance with current building regulations and in a manner that ensures CE-marking compliance. Always make sure to follow all local precautions, including those referring to national and European standards.

OTHER DISTANCES TO REAR WALL

The stove can be installed with a minimum distance of 200 mm from the rear or corner of the stove to combustible material when connected to at least a semi-insulated chimney of type T400-N1-D-Vm-L50050-G100 or when an original RAIS reflector plate is installed on the stove. If none of these conditions are met, the distance to combustible material specified in the drawings must be observed. However, it must always be taken into account that the chosen chimney solution may have other distance requirements, and for safety reasons, the greatest distance must always be observed.

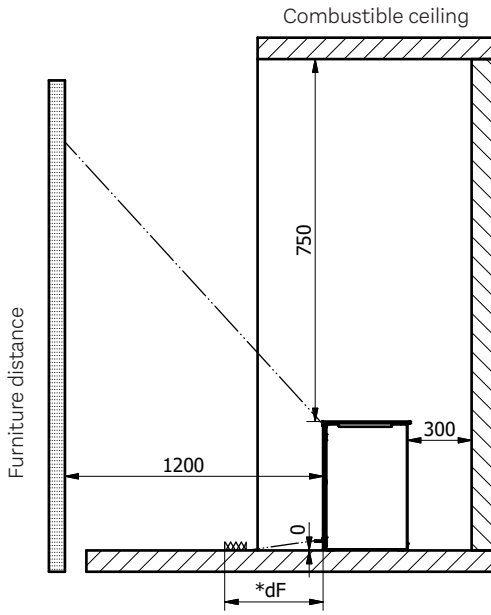
SPECIAL PRECAUTIONS FOR INSTALLATION IN UK

FREESTANDING INSTALLATION DISTANCE IN CASE OF COMBUSTIBLE WALL

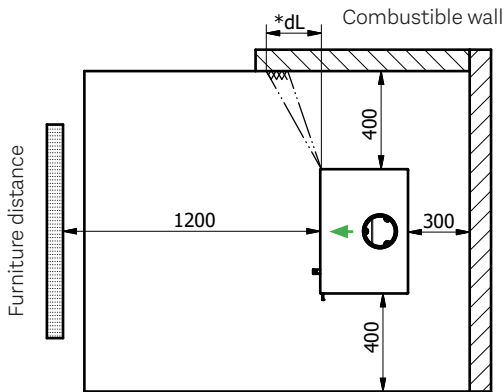
The hearth should be able to accommodate the weight of the stove. The chimney must be independently supported by wall brackets or a ceiling support plate. The weight of the stove is indicated in the brochure.

If the stove is installed with the RAIS/attika log store, the distance in front of the stove must meet the UK Building Regulations of 300 mm.

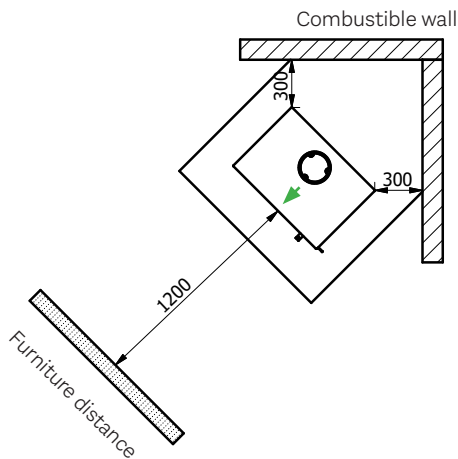
Q-TEE II



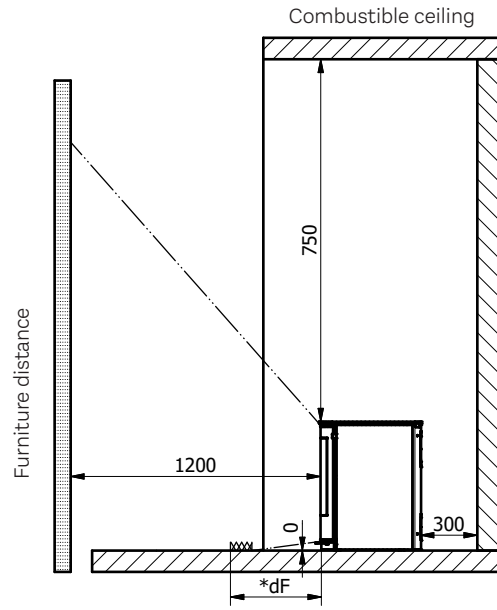
*0 mm: As 65 K is not exceeded by radiation on the floor in front and/or on the side wall.



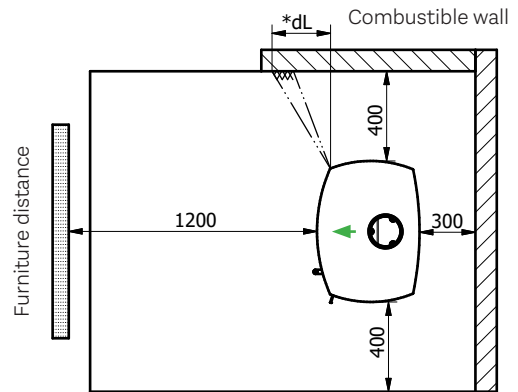
CORNER SET-UP



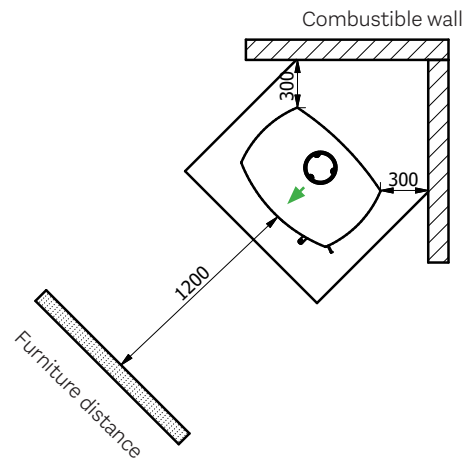
Q-TEE II C



*0 mm: As 65 K is not exceeded by radiation on the floor in front and/or on the side wall.



CORNER SET-UP



INSTALLATION DISTANCE IN CASE OF NON-COMBUSTIBLE WALL

We recommend a minimum distance to non-combustible material of **50 mm** for cleaning purposes.

IMPORTANT

Please bear in mind that the installation distances on the following pages only apply to the wood-burning stove. The final choice of Chimney solution may have a larger safety distance to the flammable material. The Chimney solution must always be installed in accordance with current building regulations and in a manner that ensures CE-marking compliance. Always make sure to follow all local precautions, including those referring to national and European standards.

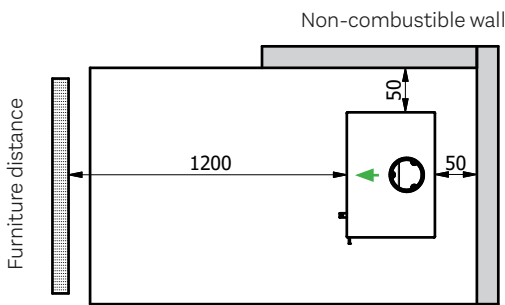


SPECIAL PRECAUTIONS FOR INSTALLATION IN UK

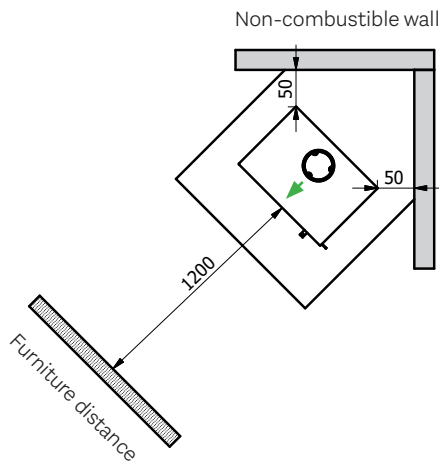
RECESS INSTALLATION - NON COMBUSTIBLE WALLS

For installation within a non combustible recess (ie a typical UK chimney breast), please refer to Section J of the UK Building Regulations which advise a minimum 225 or 300 mm in front of the appliance. The clearance distances to combustible material beneath, surrounding or upon the hearth and walls adjacent to the hearth should comply with the guidance on the separation of combustible material given in UK Building Regulations Approved Document J and also in these stove instructions.

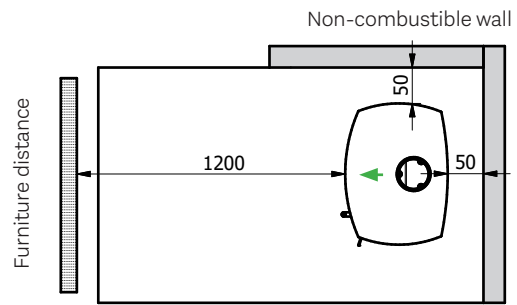
Q-TEE II



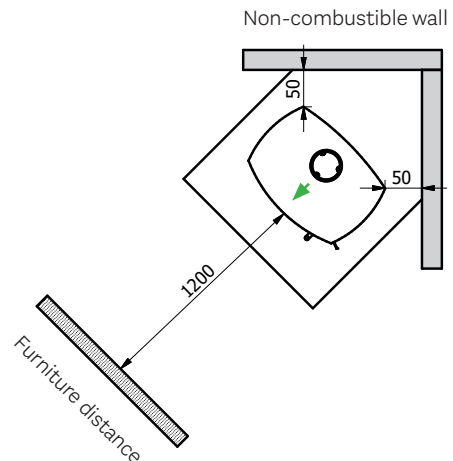
CORNER SET-UP



Q-TEE II C

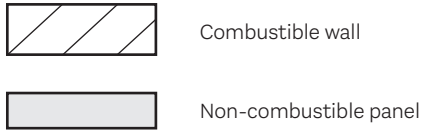


CORNER SET-UP



INSTALLATION DISTANCE IN CASE OF COMBUSTIBLE WALL WITH WALL PANELLING

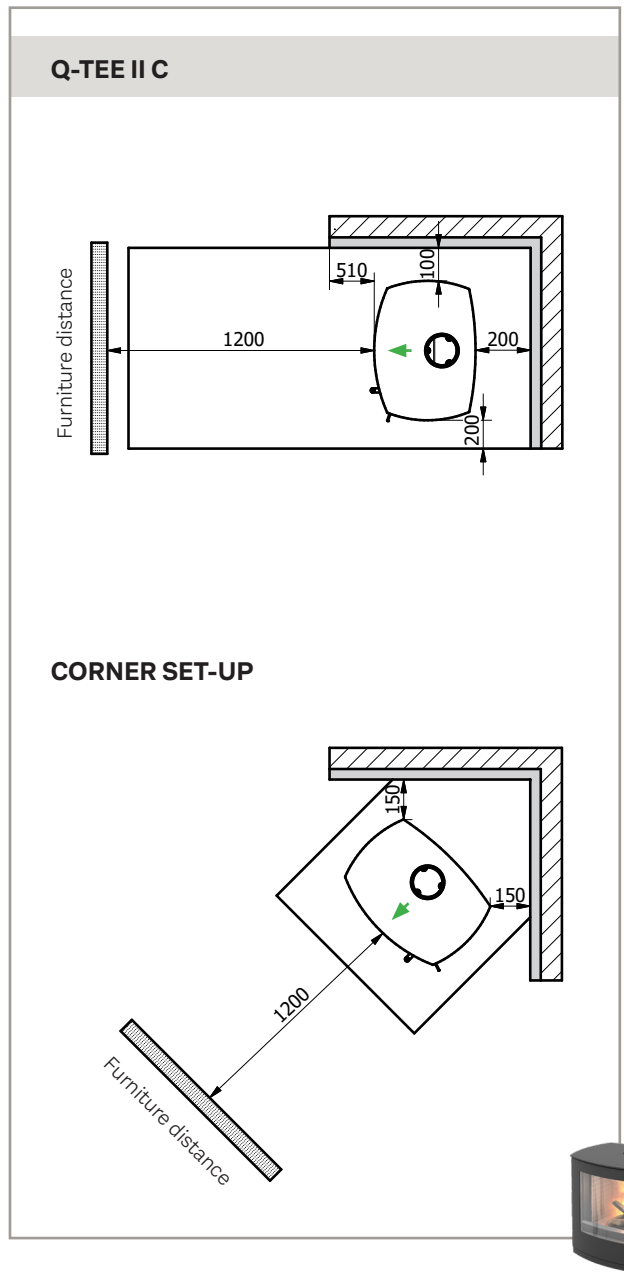
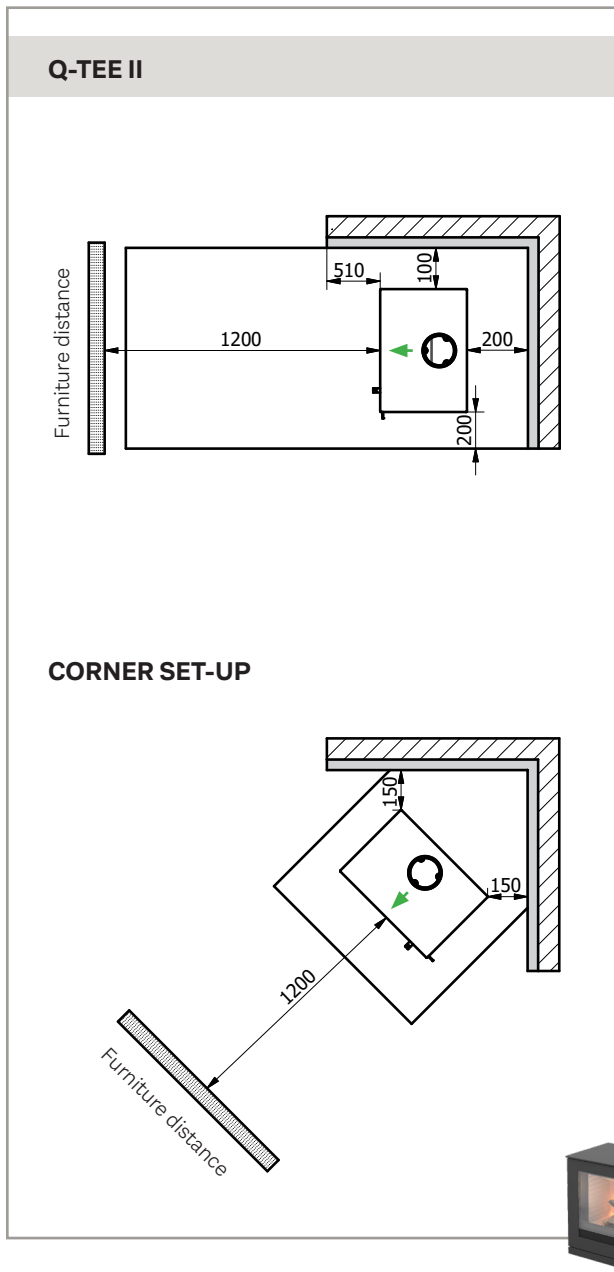
Wall panelling with 50 mm Skamotec 225 or material with similar properties.



OTHER DISTANCES FOR COMBUSTIBLE WALLS WITH WALL PANELLING

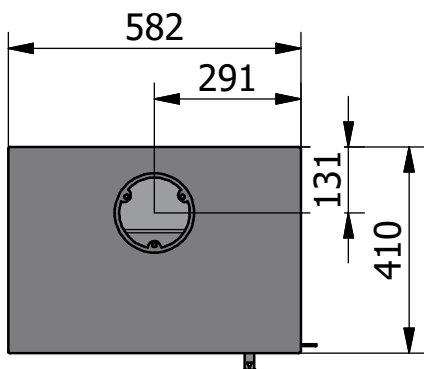
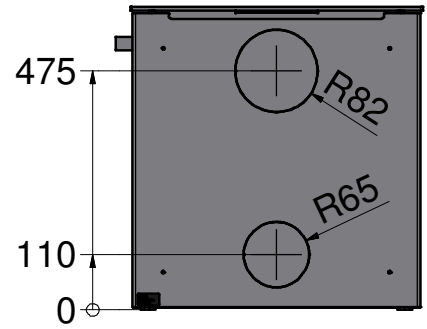
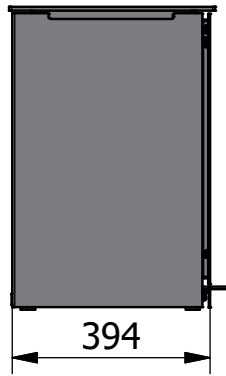
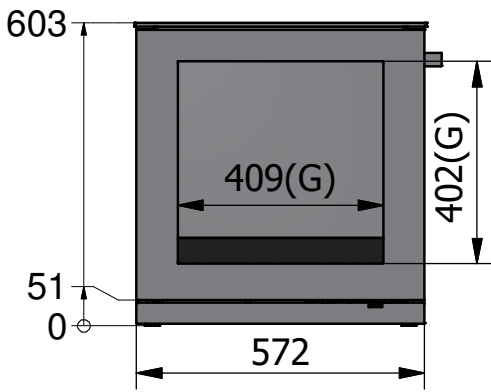
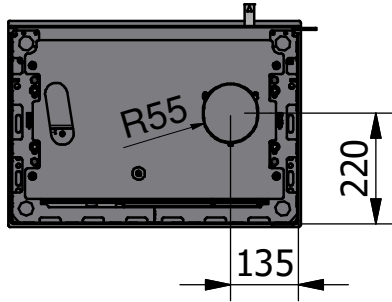
The stove can be installed on a combustibile wall with wall panelling, with a minimum distance of 50 mm to the side, 125 mm to the rear and 100 mm at the corners, when connected to at least a semi-insulated chimney of type T400-N1-D-Vm. 125 mm to the rear and 100 mm in a corner installation, when connected to at least a semi-insulated chimney of type T400-N1-D-Vm-L50050-G100 or when an original RAIS reflector plate is installed on the stove. If none of these conditions are met, the distances specified in the drawings must be observed. However, it must always be taken into account that the chosen chimney solution may have other distance requirements, and for safety reasons, the greatest distance must always be observed.

ENG

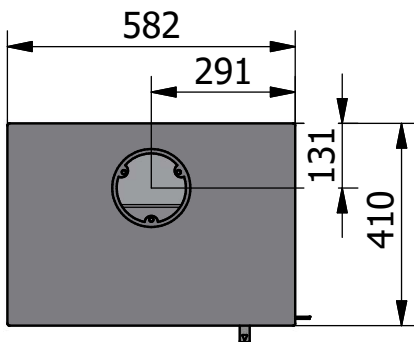
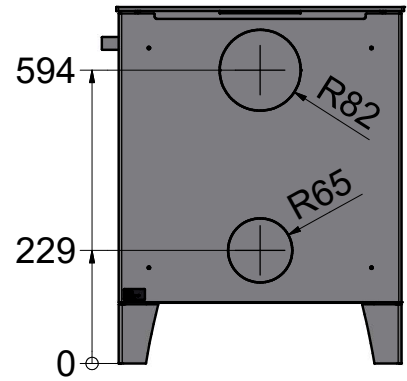
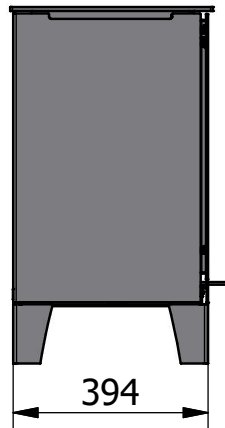
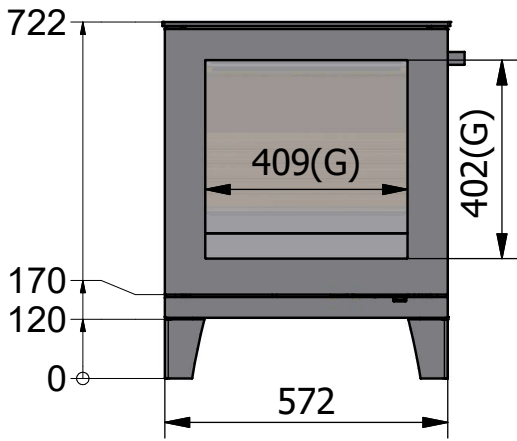
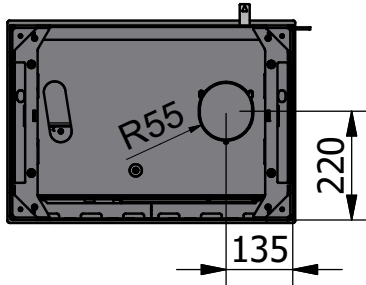


DIMENSIONAL SKETCH: Q-TEE II - 60 CM BASIC

ENG

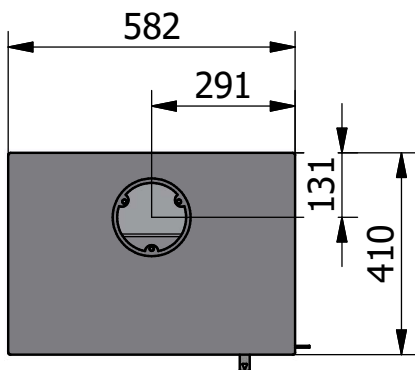
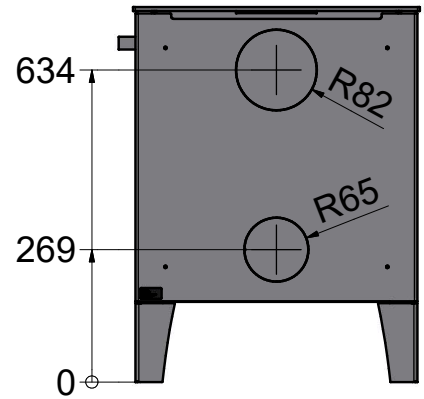
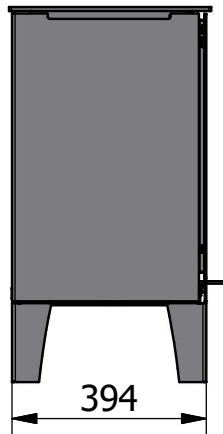
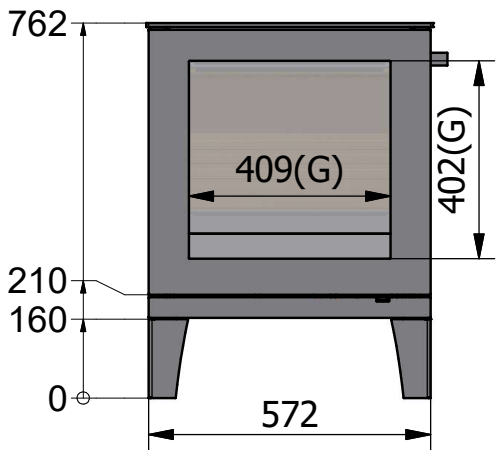
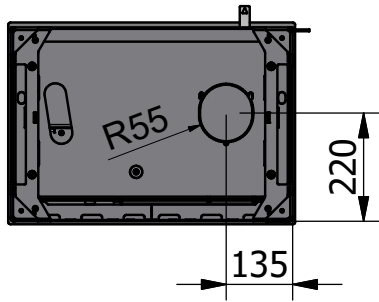


DIMENSIONAL SKETCH: Q-TEE II - 72 CM WITH LEGS

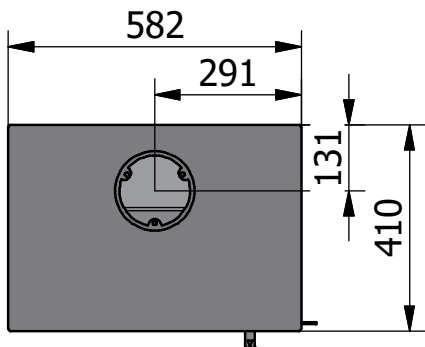
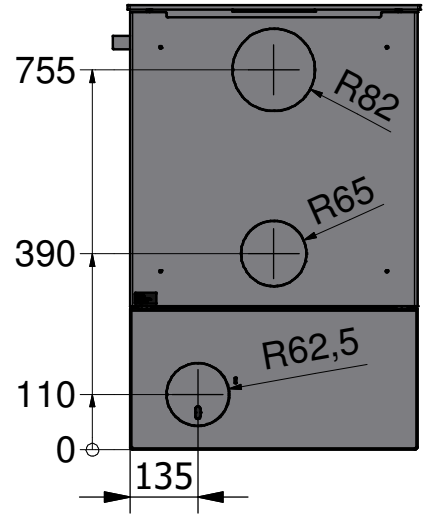
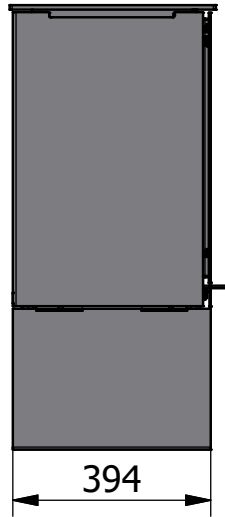
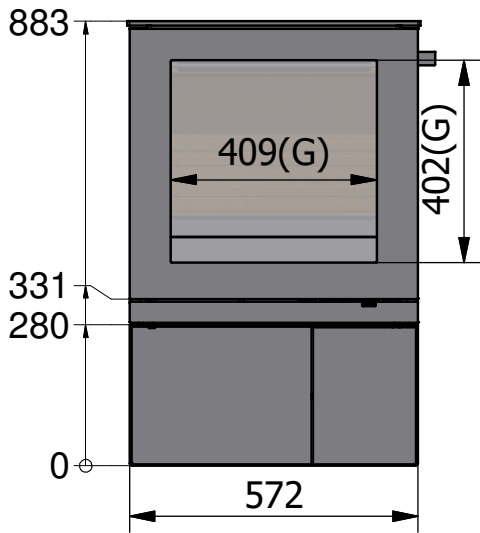
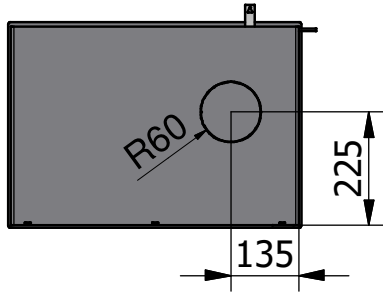


DIMENSIONAL SKETCH: Q-TEE II - 76 CM WITH LEGS

ENG

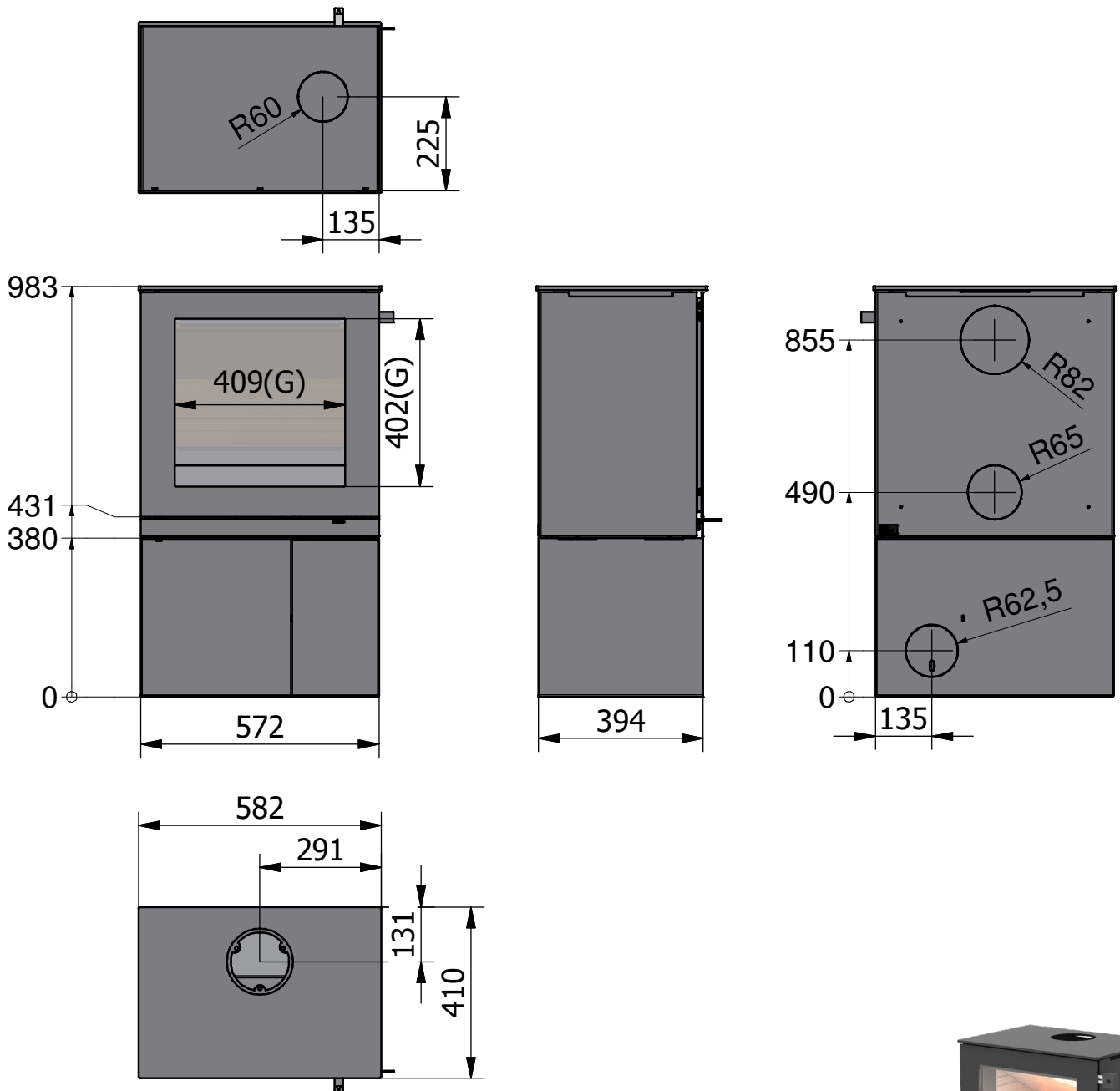


DIMENSIONAL SKETCH: Q-TEE II - 88 CM BASE

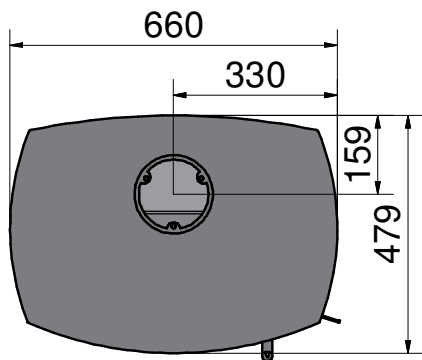
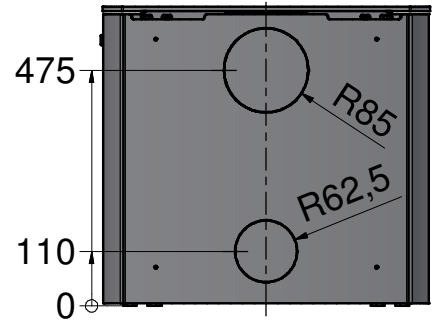
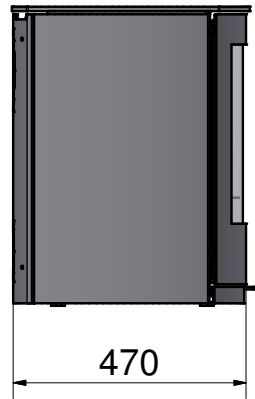
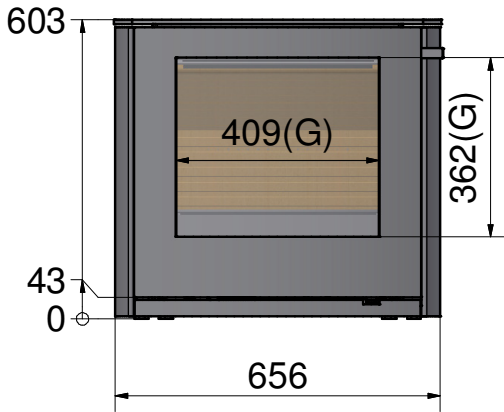
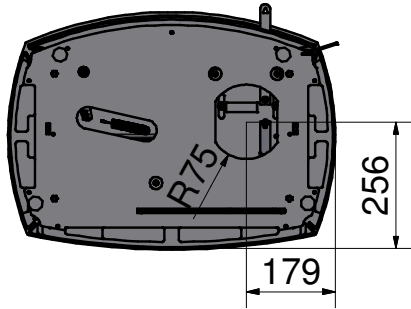


DIMENSIONAL SKETCH: Q-TEE II - 98 CM BASE

ENG

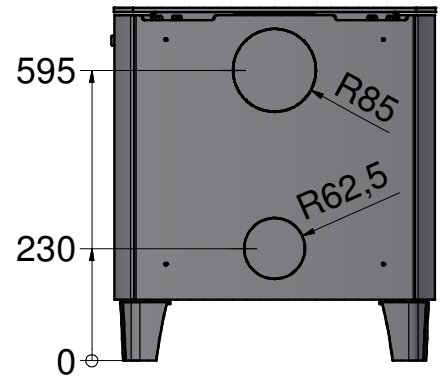
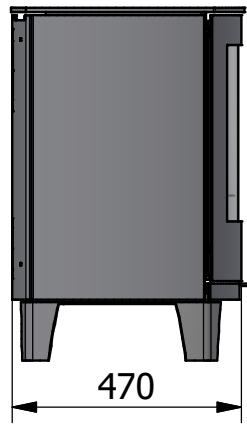
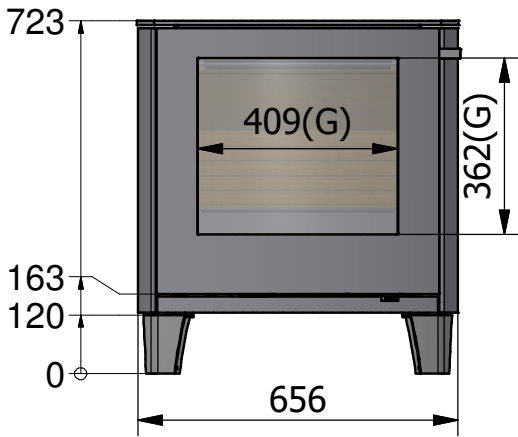
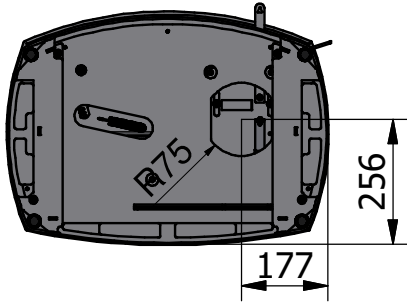


DIMENSIONAL SKETCH: Q-TEE II C - 60 CM BASIC

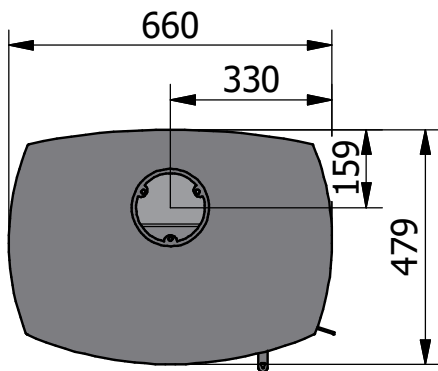
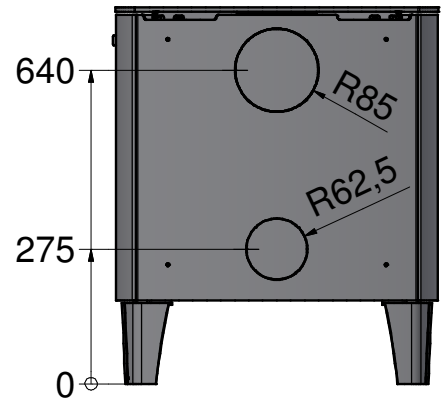
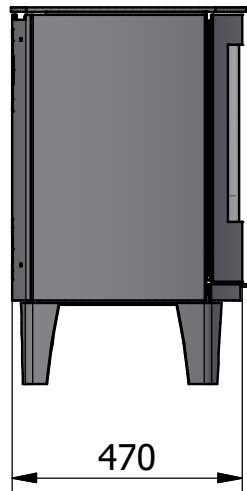
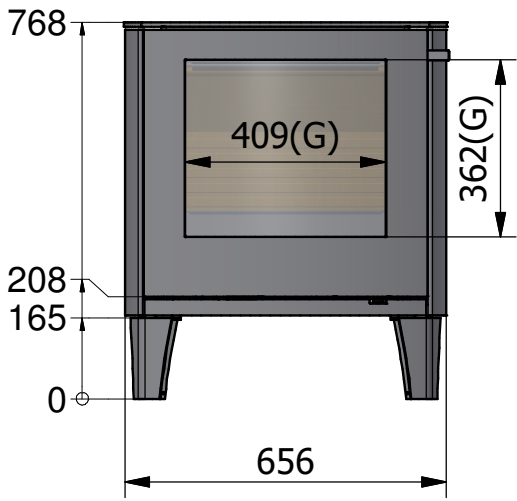
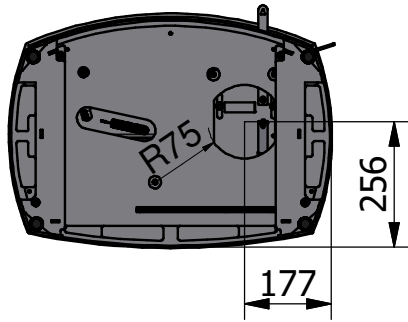


DIMENSIONAL SKETCH: Q-TEE II C - 72 CM WITH LEGS

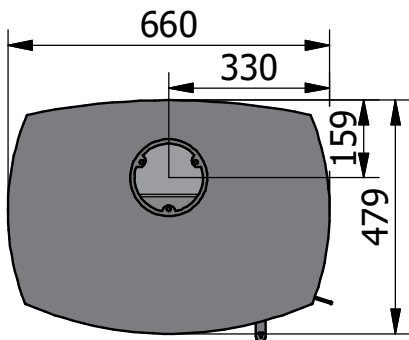
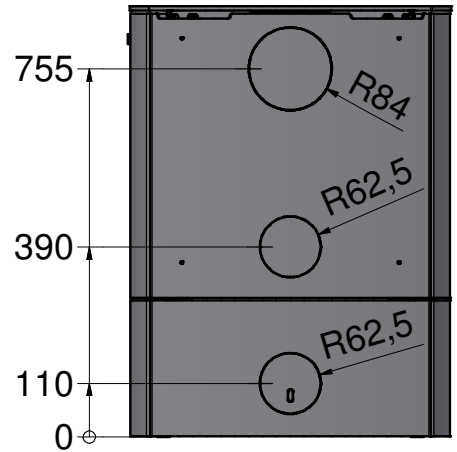
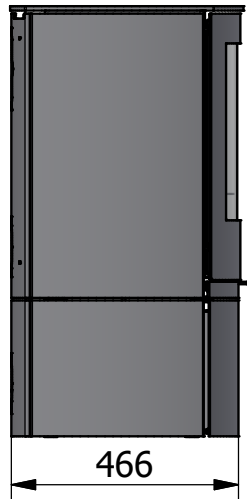
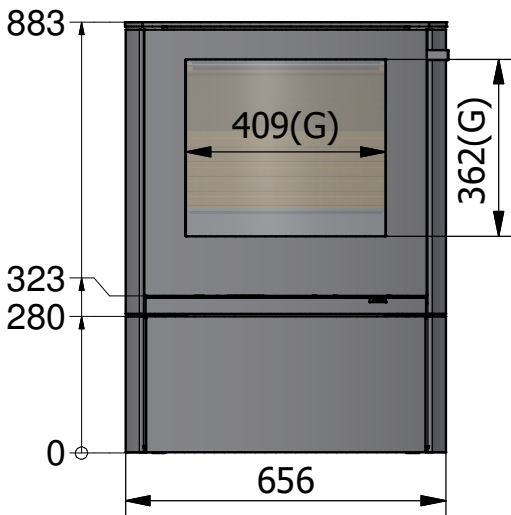
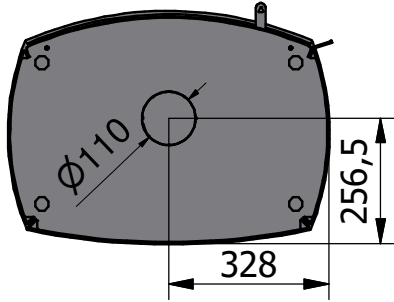
ENG



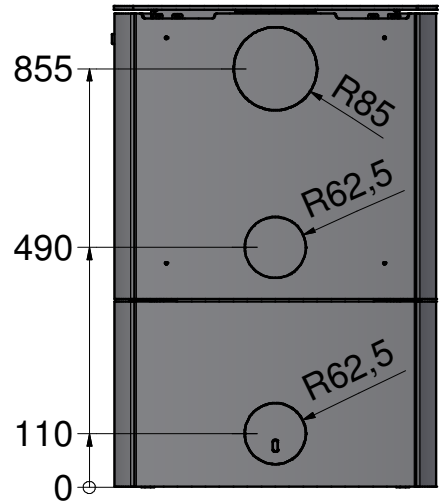
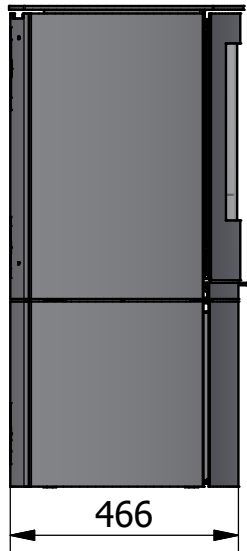
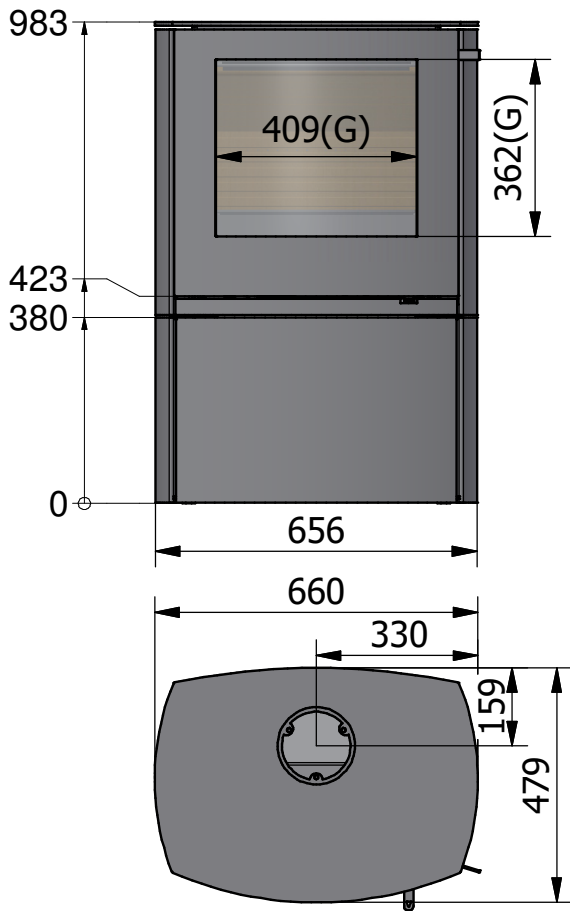
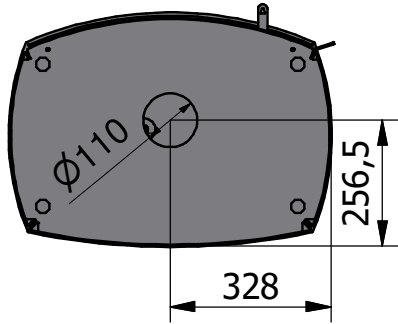
DIMENSIONAL SKETCH: Q-TEE II C - 76 CM WITH LEGS



DIMENSIONAL SKETCH: Q-TEE II C - 88 CM BASE



DIMENSIONAL SKETCH: Q-TEE II C - 98 CM BASE

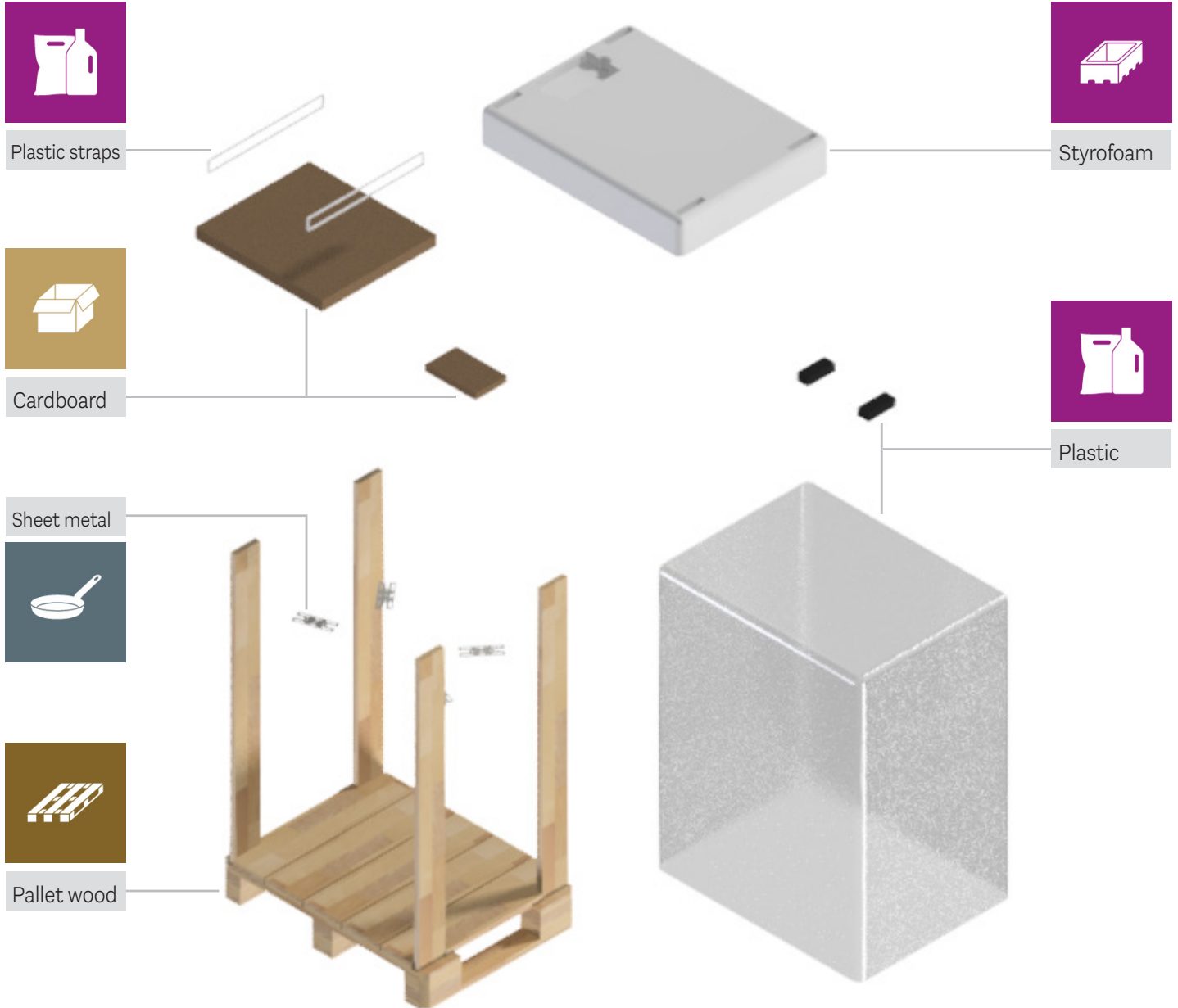




RECYCLING OF PACKAGING

The stove is delivered in recyclable packaging. This packaging must be disposed of in accordance with national regulations relating to the disposal of waste.

ENG



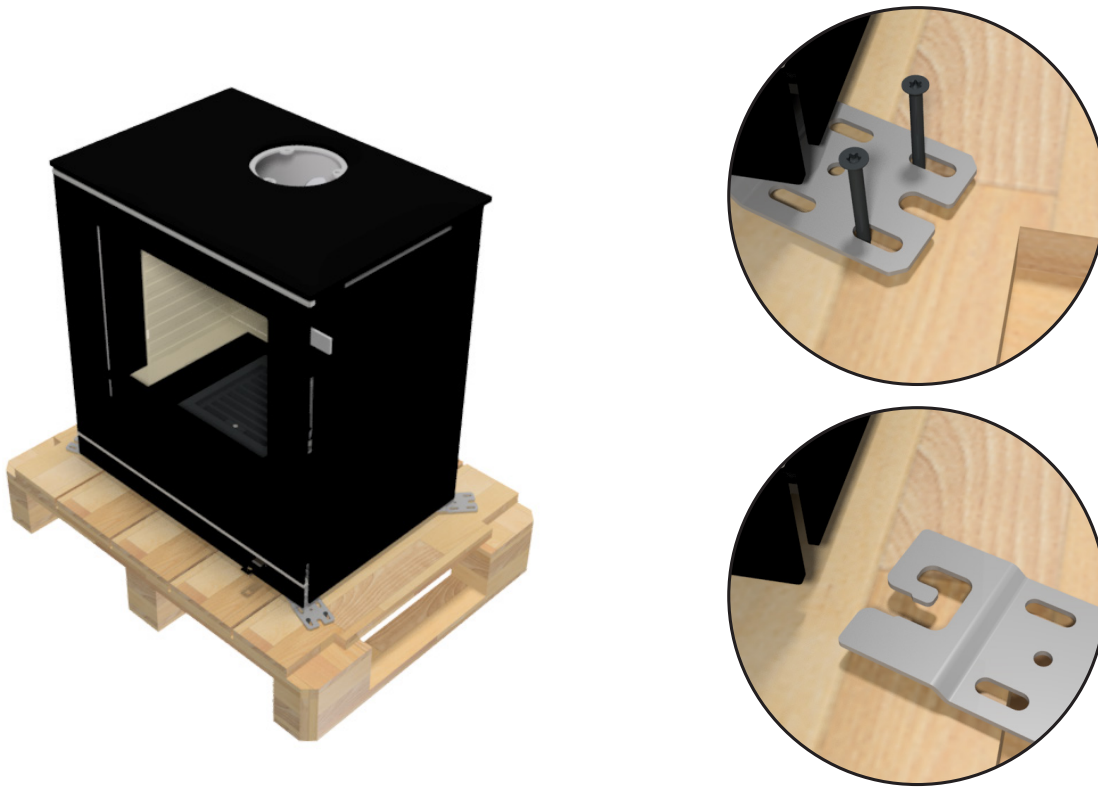
DISPOSAL AFTER END OF LIFE

When your stove can no longer be used in the distant future, it is important that it is disposed of correctly. At the end of the user manual you will find an overview of how to dispose of the stove itself at the end of its service life.



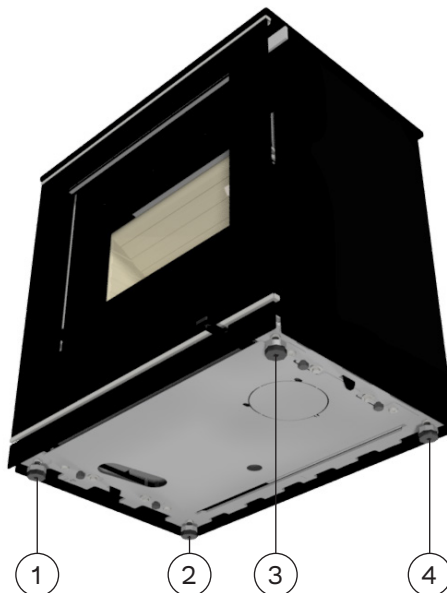
PACKAGING AT DELIVERY

Upon delivery, the stove is secured to a transport pallet using four transport safety fittings. The safety fittings are attached with screws which must be unscrewed. The safety fittings can then be removed.



HEIGHT ADJUSTMENT

There are four adjustment screws underneath the appliance. Make sure the stove is level by using the adjustment screws.



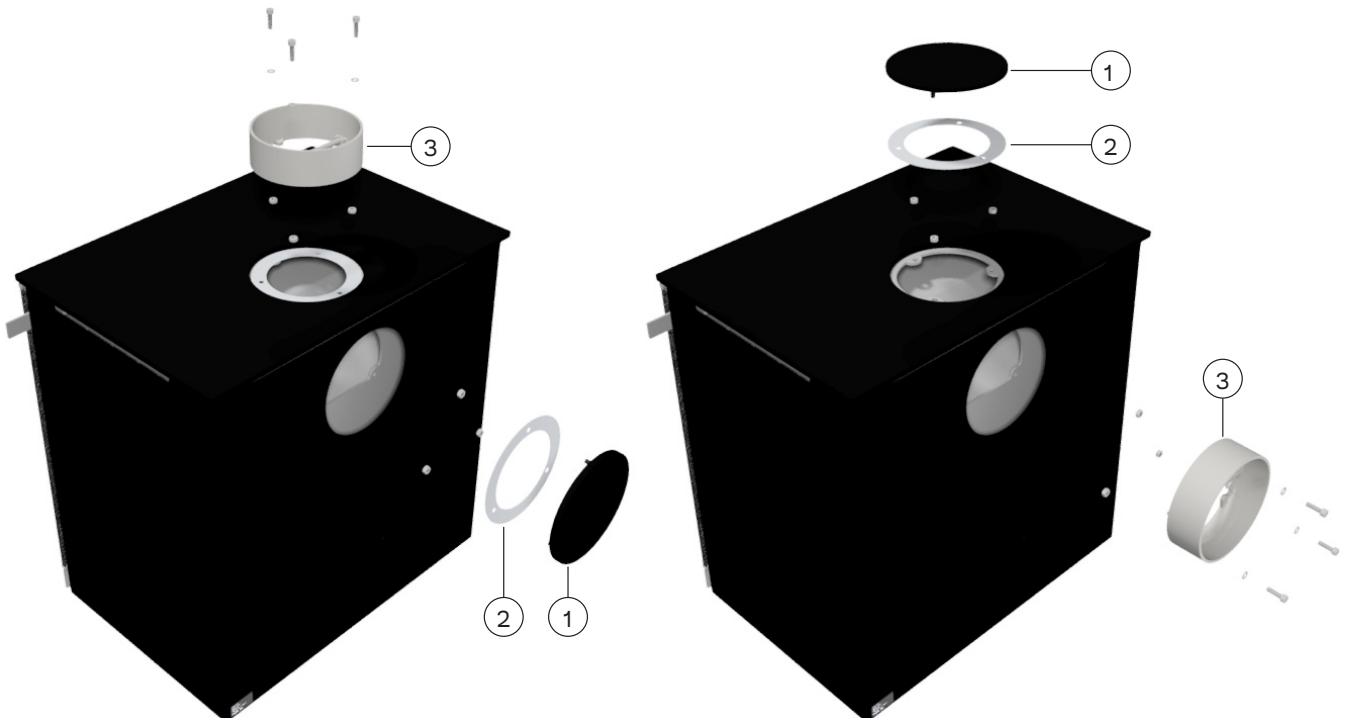
INSTALLATION OF SMOKE OUTLET IN TOP OUTLET

The stove is prepared for top outlet on delivery. Mount the flue outlet with the nuts and bolts supplied.

CHANGING THE CHIMNEY CONNECTION

The stove is delivered ready for top outlet, but can be changed to rear outlet as follows.

1. First, remove the combustion chamber liner (see next page) and the top plate.
2. At the back of the stove there is a knock-out mould that needs to be knocked out. It is secured with four small pins.
3. Remove the knock-out mould with a hammer or similar.
4. Remove the flame cover (1) and gasket (2) from the back and install on top.
5. Mount the flue outlet (3) on the rear outlet.

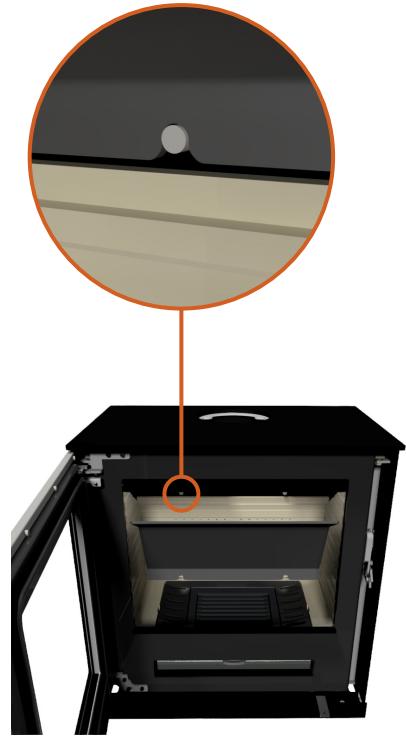


REMOVING THE COMBUSTION CHAMBER LINING

To reach the flue, carefully remove the vermiculite smoke deflector plates. Remove the smoke deflector plate by pulling it forwards and tilting it so that the rear end is clear of the vertical plates. Remove the smoke baffle by lifting it up and forward to free it from the fixings. Then insert carefully in reverse order. The same procedure is used when changing the chimney connection for access to the flue cover.



Remove the smoke deflector plate by pulling and tilting it forward.



Remove the smoke baffle by lifting it forward and tilting it to release it from the fixings.

ENG

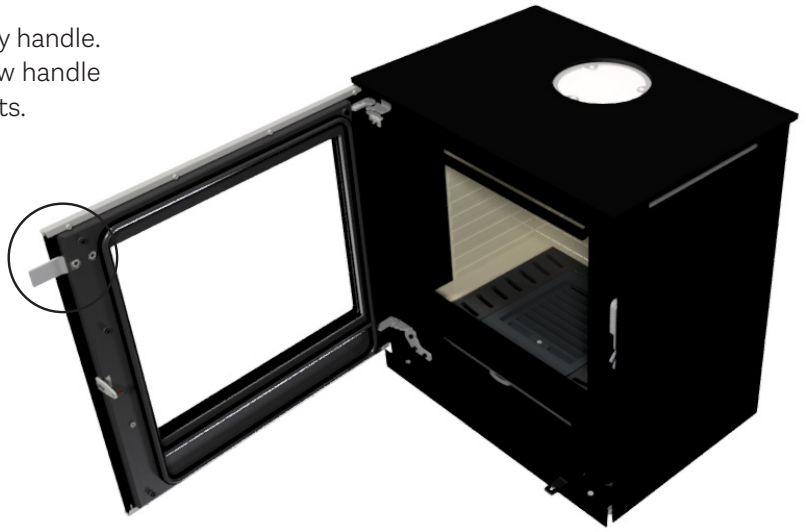
ATTENTION!

Take care when putting back the smoke deflector plates.



MOUNTING/CHANGING THE HANDLES

On delivery, the stove is fitted with a temporary handle. This is removed by removing the nuts. The new handle can then be mounted on the stove with the nuts.



CLEANING AND MAINTENANCE

It is important that the stove is cleaned and maintained both inside and out. When this is done, the stove must be cold. The stove should be inspected by a chimney sweep once a year. Always check the chimney and flue collar for blockages before a heating season. Inspect the exterior and interior of the stove for damage, especially gaskets and the thermal insulation plates (vermiculite).

The combustion chamber lining protects the stove from heat from the fire. Due to the large temperature variations, cracks may appear in the combustion chamber lining. These can last for several years and should be replaced if they start to crack. The plates are loosely placed inside the combustion chamber and can easily be replaced by you or your dealer. For detailed instructions on how to replace the plates or remove them to clean the flue, see the user manual.

Lubricating door hinges and door locks is a necessary maintenance task that should be done on a regular basis rather than just after damage has occurred. It is advised that you use only our lubricant spray; using other products may cause residue and odour to form. To obtain the lubricant, contact with your dealer.

BLOCKING THE AIR INTAKE

The stove needs permanent and sufficient air in order to burn optimally and safely. The stove draws air from the gaps along the stove and under the stove, so it is important that there is air from the bottom edge to the floor. The adjustment shoes must therefore not be adjusted all the way down so that no air can enter under the stove. For stoves with a wood compartment, it is important to avoid stacking more wood in the compartment than there is always 50 mm of space above the wood. It is therefore important that the air intake areas are not blocked or closed, as the stove takes air from the room through these areas.



When the stove is installed in a construction where direct combustion air is required, external air must be connected to the stove from the outside. All RAIS/attika stoves have the option to supply external air.

This external air supply is what we call AirSystem. The air intake for the system can be hidden by installing it either in the floor or in the wall behind the stove. If you order a stove with AirSystem, it is installed before you receive it from us. All you have to do is connect it in your home.

The maximum length of the flex hose is 5 metres. It is important that it is not bent and folded around corners

so that the tube collapses and the airflow cannot get through as intended.

If the air supply is 5-10 metres from the stove, use a Ø120 mm flex hose instead.

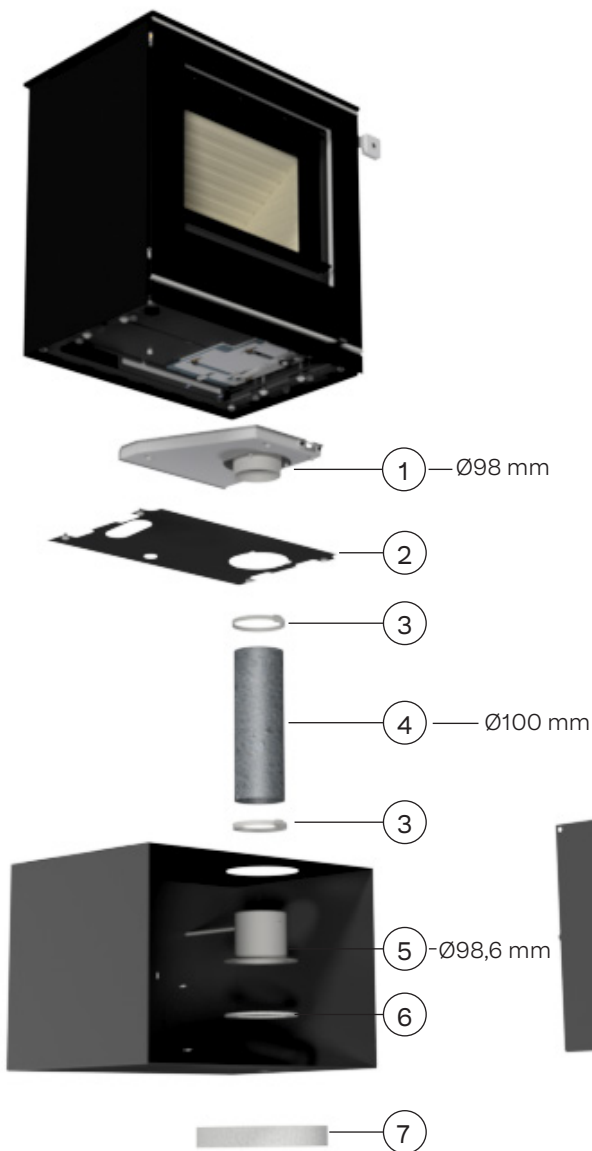
The air valve must be set to the open position during use to allow outside air to enter the stove. If the stove is unused for a period of time, you can close the air vent to prevent cold air from entering the installation room.



ATTENTION!

In countries where legislation does not allow closing the air supply, the damper plate in the air valve must be removed.

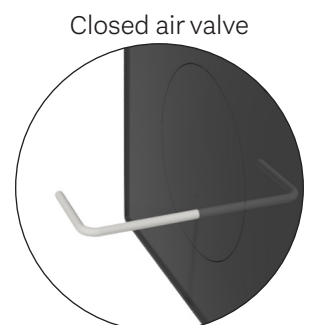
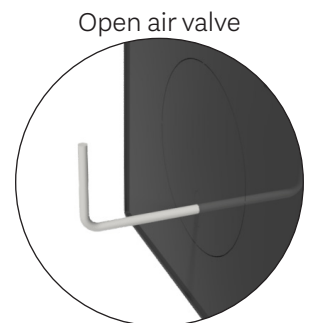
ENG



AIR CONNECTION AT THE BOTTOM

If you purchase a stove with bottom air connection, mount the airbox (1) under the reflector plate (2). Then attach the flexible hose (4) and hose clamps (3) to the airbox (1) and the air valve (5). The gasket (6) over the hole in the base plate. The gasket (7) is fitted over the hole leading to the outside.

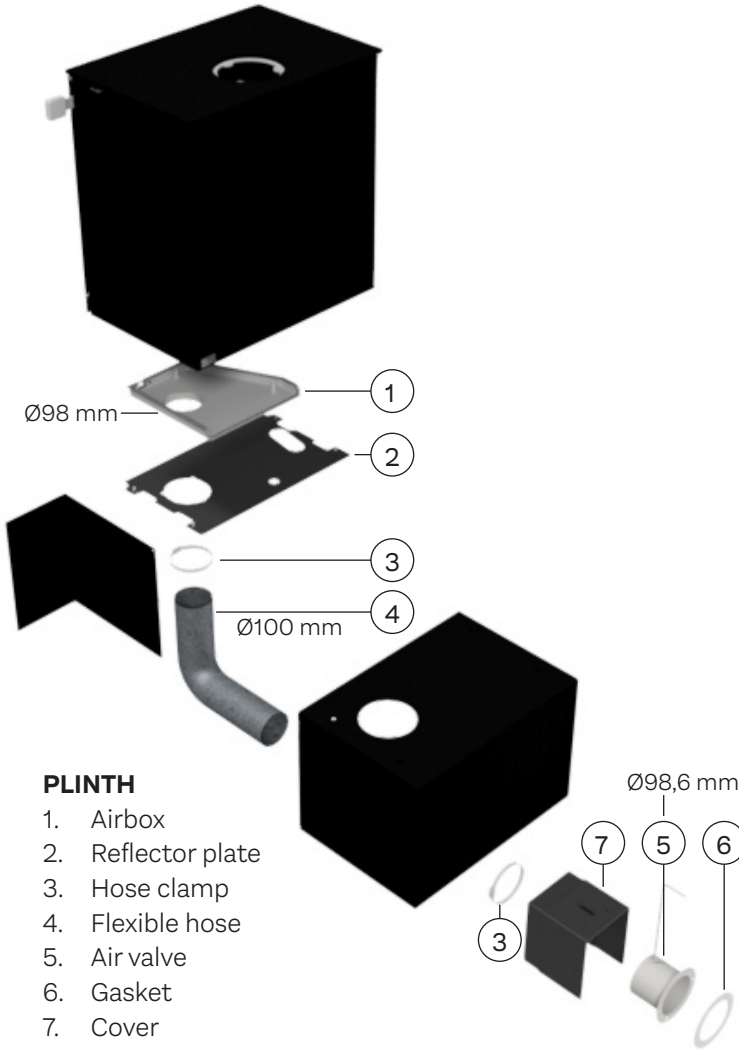
1. Airbox
2. Reflector plate
3. Hose clamp
4. Flexible hose
5. Air valve
6. Gasket
7. Gasket



AIR CONNECTION ON THE BACK

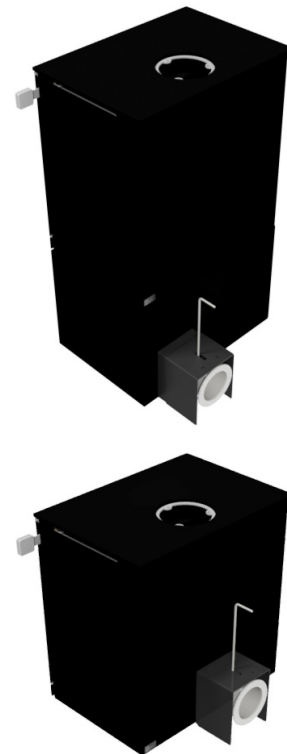
When purchasing a stove with rear air connection, it can either be mounted in the plinth or directly on the back. For base mounting, mount the airbox (1) under the reflector plate (2). For rear mounting, use the mounting flange (1).

Then follow the same procedure. Attach the flexible hose (4) and hose clamps (3) to the airbox (1) and air valve (5). The gasket (6) on the hole leading to the outside. Then fit the cover (7).

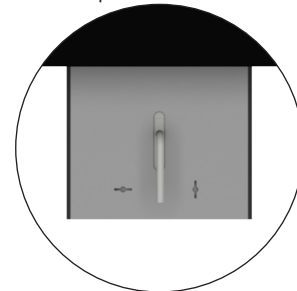


PLINTH

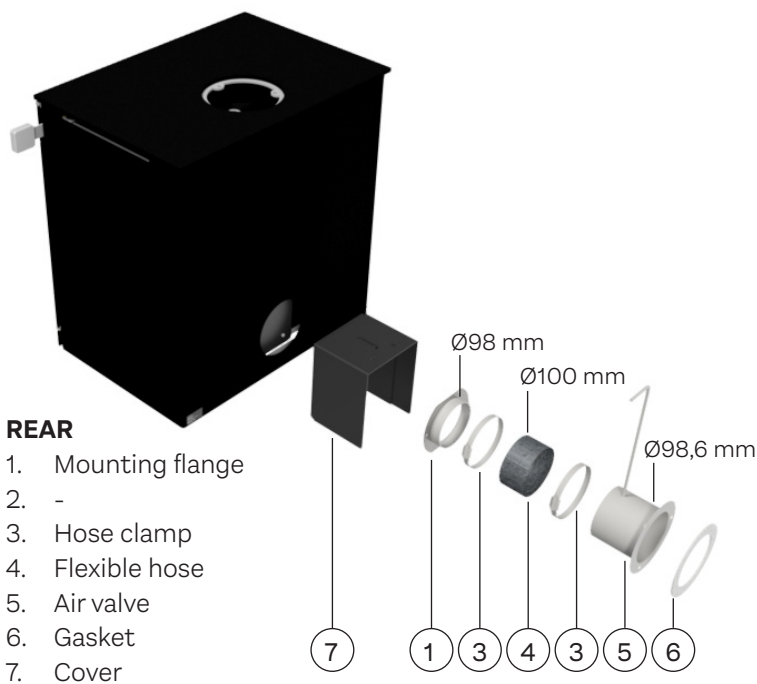
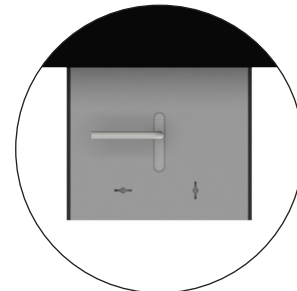
1. Airbox
2. Reflector plate
3. Hose clamp
4. Flexible hose
5. Air valve
6. Gasket
7. Cover



Open air valve



Closed air valve



REAR

1. Mounting flange
2. -
3. Hose clamp
4. Flexible hose
5. Air valve
6. Gasket
7. Cover

PERMANENT AIR SUPPLY

The appliance needs a permanent air supply to the room of installation as the appliance is over 5 kW, confer with Building regulation Approved Document J.

Permanently open air vents should be non-adjustable, sized to admit sufficient air for the purpose intended and positioned where they are unlikely to become blocked. See Approved Document J.

A CO Alarm must be fitted into the same room as the appliance upon installation. The alarm shall be compliant with British Standards BS 50291. Where battery powered alarms are selected, alarms with 'sealed for life' batteries rather than alarms with replaceable batteries are the better option.

THE CLEAN AIR ACT 1993 AND SMOKE CONTROL AREAS

Under the clean air act local authorities may declare the whole or part of the district of the authority to be a smoke control area. It is an offence to emit smoke from a chimney of a building, from a furnace or from any fixed boiler if located in a designated smoke control area. It is also an offence to acquire an "unauthorised fuel" for use within a smoke control area unless it is used in an "exempt" appliance ("exempted" from the controls which generally apply in the smoke control area).

In England appliances are exempted by publication on a list by the secretary of state in accordance with changes made to sections 20 and 21 of the clean air act 1993 by section 15 of the deregulation act 2015. In Scotland appliances are exempted by publication on a list by Scottish ministers under section 50 of the regulatory reform (Scotland) act 2014. Similarly, in Northern Ireland appliances are exempted by publication on a list by the department of agriculture, environment and rural affairs under section 16 of the environmental better regulation act (Northern Ireland) 2016. In Wales appliances are exempted by regulations made by Welsh ministers.

The secretary of state for environment, food and rural affairs has powers under the act to authorize smokeless fuels or exempt appliances for use in smoke control areas in England. In Scotland and Wales this power rests with the ministers in the devolved administrations for those countries. Separate legislation, the clean air (Northern Ireland) order 1981, applies in Northern Ireland. Therefore it is a requirement that fuels burnt or obtained for use in smoke control areas have been "authorised" in regulations and that appliances used to burn solid fuel in those areas (other than "authorised" fuels) have been exempted by an order made and signed by the secretary of state or minister in the devolved administrations.

**ATTENTION!**

This page is only relevant for appliances installed in United Kingdom.

The Q-Tee II & Q-Tee II C (All variants) have been recommended as suitable for use in smoke control areas when burning wood logs.

FUEL OVERLOADING

The maximum amount of fuel specified in this manual should not be exceeded, overloading can cause excess smoke.

REFUELLING ON TO A LOW FIRE BED

If there is insufficient burning material in the firebed to light a new fuel charge, excessive smoke emission can occur. Refuelling must be carried out onto a sufficient quantity of glowing embers and ash that the new fuel charge will ignite in a reasonable period. If there are too few embers in the fire bed add suitable kindling to prevent excess smoke.

DAMPERS LEFT OPEN

Operation with the air control or appliance dampers open can cause excess smoke. The appliance must not be operated with air controls, appliance dampers or door left open except as directed in the instructions.

OPERATION WITH DOOR LEFT OPEN

Operation with the door open can cause excess smoke. The appliance must not be operated with the appliance door left open except as directed in the instructions.

CHIMNEY

NOTE: A chimney height of not less than 4.5 metres measured vertically from the outlet of the stove to the top of the chimney should be satisfactory. Alternatively the calculation procedure given in BS 5854:1980 may be used as the basis for deciding whether a particular chimney design will provide sufficient draught.

The outlet from the chimney should be above the roof of the building in accordance with the provisions of Building Regulations Approved Document J.

If installation is into an existing chimney then it must be sound and have no cracks or other faults which might allow fumes into the house. Older properties, especially, may have chimney faults or the cross section may be too large i.e. more than 230 mm x 230 mm. Remedial action should be taken, if required, seeking expert advice, if necessary. If it is found necessary to line the

chimney then a flue liner suitable for solid fuel must be used in accordance with Building Regulations Approved Document J.

Any existing chimney must be clear of obstruction and have been swept clean immediately before installation of the stove. If the stove is fitted in place of an open fire then the chimney should be swept one month after installation to clear any soot falls which may have occurred due to the difference in combustion between the stove and the open fire.

If there is no existing chimney then either a prefabricated block chimney in accordance with Building Regulations Approved Document J or a twin walled insulated stainless steel flue to BS 1856-1 can be used. These chimneys must be fitted in accordance with the manufacturer's instructions and Building Regulations.

A single wall metal fluepipe is suitable for connecting the stove to the chimney but is not suitable for using for the complete chimney. The chimney and connecting fluepipe must have a minimum diameter of 125 mm. Any bend in the chimney or connecting fluepipe should not exceed 45°. 90°bends should not be used.

Combustible material should not be located where the heat dissipating through the walls of fireplaces or flues could ignite it. Therefore when installing the stove in the presence of combustible materials due account must be taken of the guidance on the separation of combustible material given in Building Regulations Approved Document J and also in these stove instructions.

If it is found that there is excessive draught in the chimney then either an adjustable flue damper or alternatively a draught stabiliser should be fitted. The adjustable flue damper should not close off the flue entirely but should in its closed position leave a minimum continuous opening free area of at least 20 % of the total cross sectional area of the flue or fluepipe. Adequate provision e.g. easily accessible soot door or doors must be provided for sweeping the chimney and connecting fluepipe. The flue outlet spigot is either 150 mm (6") in diameter, or 129 mm (5") in diameter.

For strong draughts, the chimney or flue should be fitted with a draught stabiliser. In which case, it is important to ensure that there is a free flow-through area of minimum 20 cm² when the regulating gate is shut. Otherwise, the fuel energy may not be used optimally. If, at any time, you are unsure about the condition of the chimney, you should contact a chimney sweep. Remember that access to the access door should be kept clear.



WARNING! Health and Safety Advice Notice

The installation of this heating appliance is governed by the Health and Safety at Work Act 1974. It is the responsibility of the installer to ensure that all requirements of this Act are met during the installation works. Attention is drawn in particular to the following:

HANDLING

The appliance is a heavy item and adequate facilities must be available for loading, unloading and site handling.

FIRE CEMENT

Some types of fire cement are caustic and should not be allowed to come into contact with the skin. Protective gloves should be worn when handling fire cement. In case of contact with the skin wash immediately with plenty of water.

ASBESTOS

This stove contains no asbestos. If there is a possibility of disturbing any asbestos in the course of installation then please seek specialist guidance and use appropriate protective equipment.

METAL PARTS

When installing or servicing this stove care should be taken to avoid the possibility of personal injury.



Article number: 8426520ENG



5 708252 432611

RAIS[®]

RAIS A/S
Industrivej 20
DK-9900 Frederikshavn
Denmark
www.rais.com

attika[®]
FEUERKULTUR

ATTIKA FEUER AG
Brunnmatt 16
CH-6330 Cham
Switzerland
www.attika.ch