



VISIO GAS

LOG PLACEMENT (GB)

VISIO 70 RD

VISIO 70 T

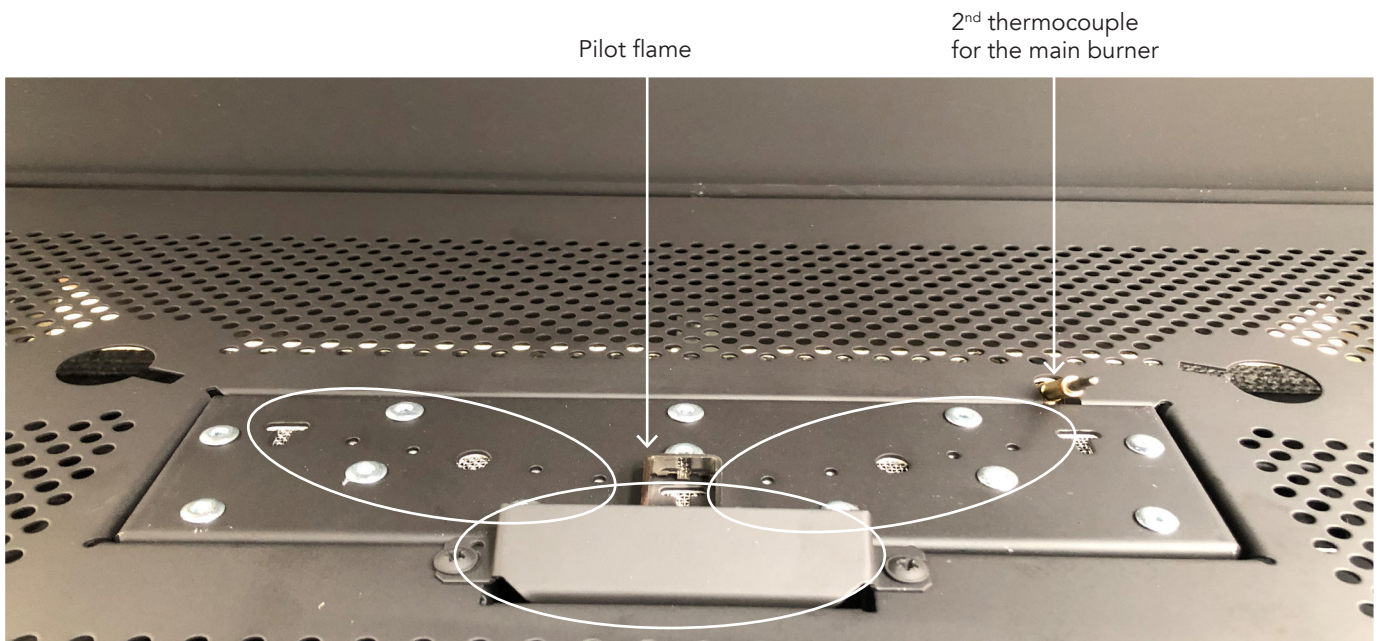
RAIS[®]

ARRANGING THE CERAMIC LOGS

When arranging the ceramic logs and the embers layer in the combustion chamber, it is important that they do not cover the pilot flame and its thermocouple, and ember material must not be placed under the pilot guard.

Both thermocouples must be kept free of the embers layer. Do not cover the holes in the main burner (see the circles).

When commissioning or servicing the fireplace, it must be ensured that the cross ignition (from the pilot flame to the main burner) functions, and that ignition occurs easily with the secondary burners.



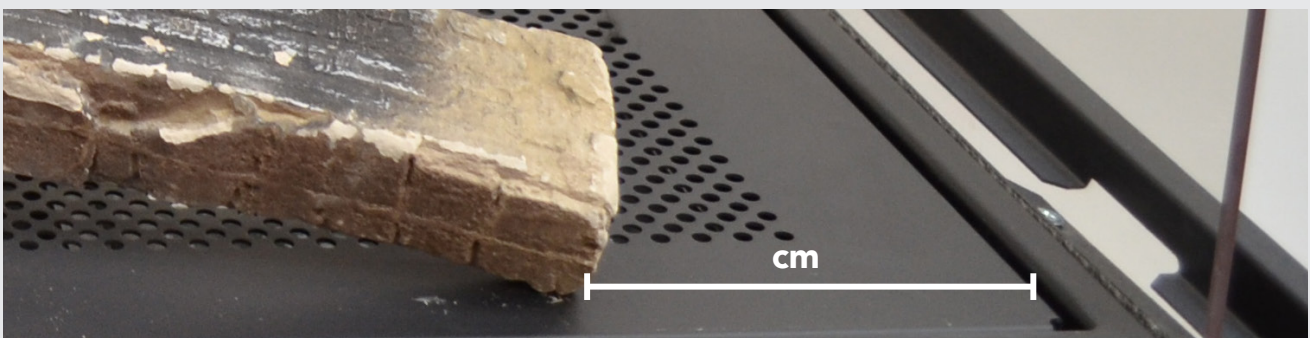
WARNING!

It is very important that you follow this manual when positioning ceramic logs and the embers layer in the fireplace. Failure to carry this out correctly will result in a flame profile that is less than optimal. Incorrect placement of the logs can lead to a dangerous situation.



NOTE!

The measurements on the following photos are taken **from the edge of the base plate**. See photo below.



LOG PLACEMENT – VISIO 70 RD AND VISIO 70 T

The following ceramic logs must be used.



A small elevation
in log no. 4
can be used for
identification

1. Start by securing the two secondary burners in the fireplace's base plate.

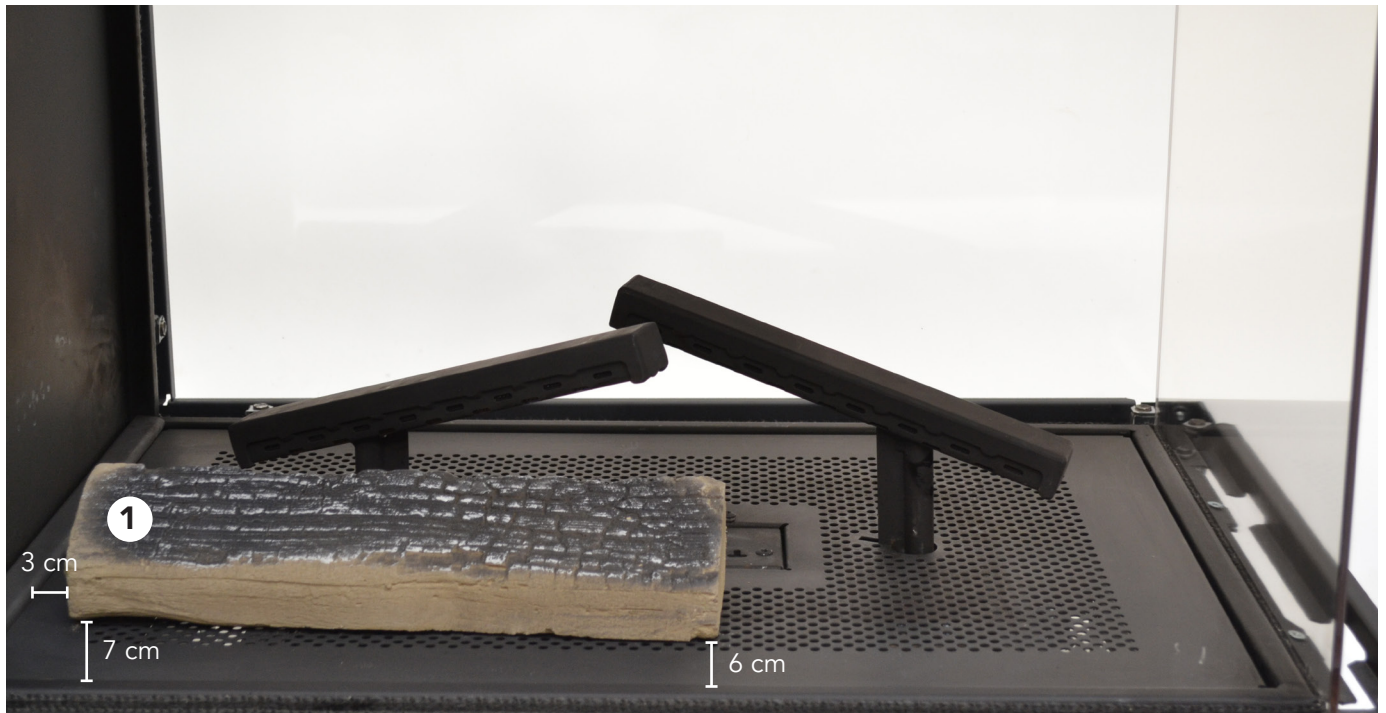


NOTE!

The tip of the secondary burners must be twisted as far from each other as possible.



2. Start from the opposite side of the pilot flame – see the photo on the previous page. Place ceramic log no. 1 as shown in the photo



3. Then place ceramic log no. 2 as shown in the photo. Now the remaining logs must be put in from the opposite side. Therefore, go over to the same side as the pilot flame.



4. From the opposite side, place ceramic log no. 3 as shown in the photo.



5. Place ceramic log no. 4, so that it rests on log no. 3.



6. Now the glass pieces must be distributed in the burning chamber. Measure 5 dl of glass into a measuring cup.



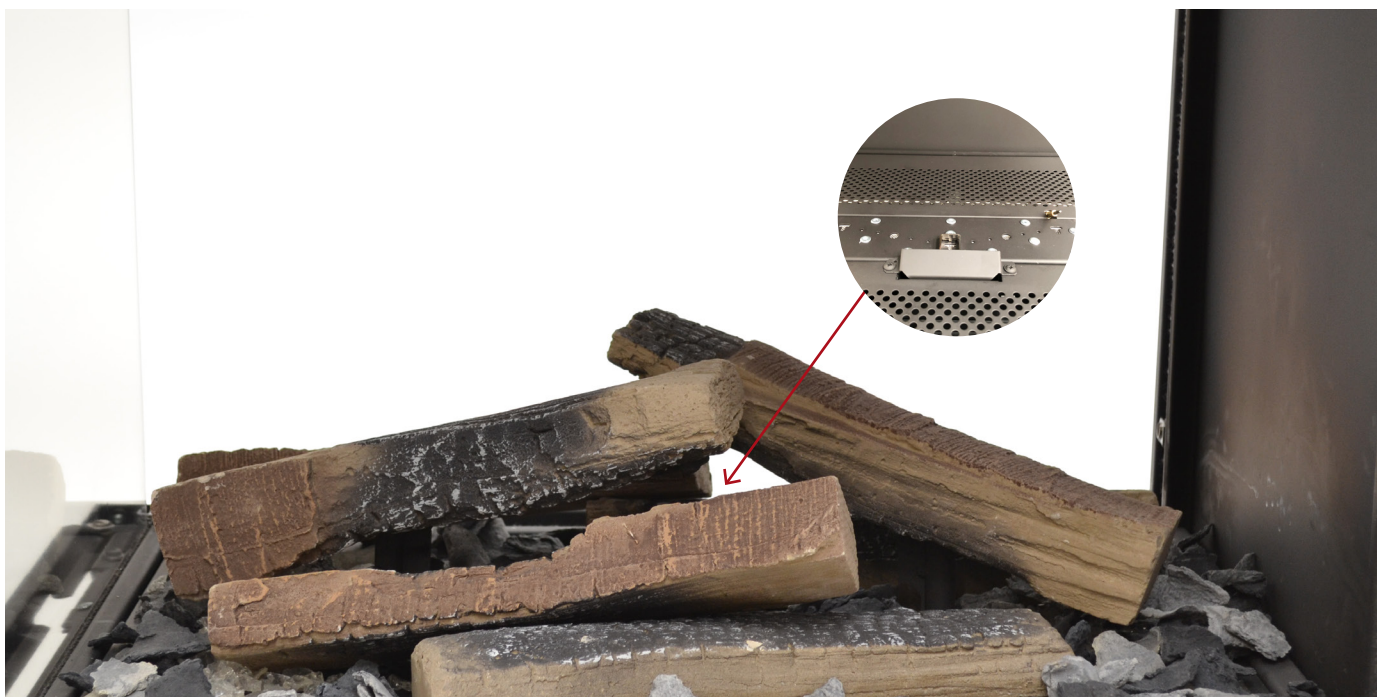
7. Distribute the glass pieces (5 dl in total) on both sides of the gas fireplace – over the LED lights. It is important that the pieces of glass are distributed in a thin layer that just exactly covers the holes in the bottom of the fireplace.



8. Now measure 2.5 L of the ember chips (a mixture of the grey and the black chips).



9. Sprinkle the ember chips over both the glass pieces and the rest of the base plate. Place the filament on the bottom burner.



WARNING!

Be aware that the main burner and pilot flame are kept free of all ornaments.

10. Place the filament on the main burner for an extra glowing effect.
The filament must not get in contact with the thermocouples – use the chips to secure the filaments.



11. Place ceramic log no. 5 on top of the secondary burner to the right.



12. Place ceramic log no. 6 on the secondary burner to the left.





RAIS[®]

RAIS A/S
Industrivej 20
DK-9900 Frederikshavn
Denmark
www.rais.com